

Feature overview - Command Center®

February 2012

The gateProtect Command Center® is the ideal solution for managed security service providers and companies that need to manage numerous firewalls from a central point of administration. The Command Center enables them to centrally manage, configure and monitor up to 500 gateProtect appliances.

The gateProtect Command Center supplies MSS providers and corporate IT departments with a broad range of features they need for global management of IT security systems. This includes active management of connected firewall systems, complete monitoring e.g. supervision of all parameters relating to operations and security, as well as central backup management and archiving, licence management, VPN certificate administration and configuration.



Feature Specifications

▶ Rollout management fast and efficiently

Large-scaled IT network rollouts present administrators with a special challenge. The gateProtect Command Center® is a professional solution that makes their lives much easier. Pre-fabricated standard configurations (to any depth of detail) can be distributed and installed immediately from the central administration point.

A corporation-wide standard for all firewalls can therefore be created and uploaded within a very short space of time. Naturally, the configurations created for individual firewalls can also be adapted when the need arises. This is a key factor to minimize costs and accelerate rollouts.

▶ Monitoring (Dash board view)

- Monitoring 500+ firewalls
- System information
- CPU- / memory usage
- Long term statistics
- HDD status (partitions, usage, RAID)
- Network status (interfaces, routing, traffic, errors)
- Process monitoring
- VPN monitoring
- User authentication monitoring

▶ Configuration

- Display settings of all firewalls
- Active configuration of 500+ firewalls with standard configurations
- Create and apply templates on multiple firewalls
- eGUI technology inside
 - ISO 9241 compliant
 - self-explaining functions
 - overview of the entire network
 - Zoomable world map
 - Custom background map supported
 - Role based command center user management
 - Object oriented firewall configuration

▶ Centralized work stages

- Single- and group-backup
- Remote backup creation
- Automatic and time based creation of backups
- Automatic upload of backups on FTP or SCP-Server on multiple firewalls
- Automatic backup management for groups
- Small backup files (kb)
- Single- and group update
- Single- and group licensing
- Central certificate management

▶ VPN

- VPN connections centrally creatable

IPSec

- Site-to-site
- Client-to-Site (Road warrior)
- Tunnel Mode
- IKEv1, IKEv2
- PSK
- X.509 certificates
- 3DES, AES (128, 192, 256)
- Blowfish (128, 192, 256)
- DPD (Dead Peer Detection)
- Compression
- PFS (Perfect Forward Secrecy)
- MD5, SHA1, SHA2 (256, 384, 512)
- Diffi Hellman group (1, 2, 5, 14, 15, 16,17,18)

SSL

- Site-to-site
- Client-to-Site (Road warrior)
- Routing Mode VPN
- Bridge Mode VPN
- X.509 certificates
- TCP/UDP port changeable
- Compression
- Specify WINS- and DNS servers
- 3DES, AES (128, 192, 256)
- CAST5, Blowfish

▶ Security

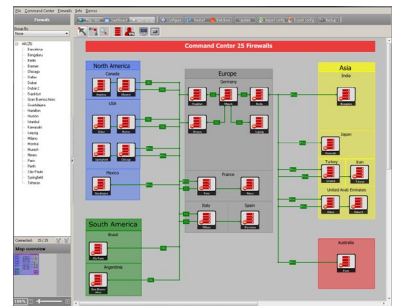
- Certificate based 4096 bit encrypted connections to the firewalls

▶ Hardware requirements

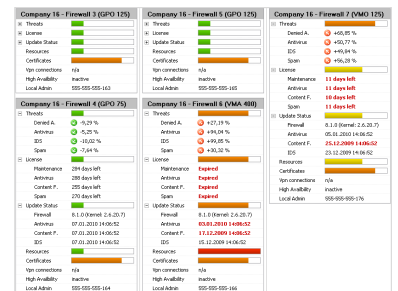
- CPU
INTEL® Dual Core (3.0 GHz)
- Memory
4096 MB
- Hard disk
160 GB HDD (24/7)

Compliance with these hardware requirements is indispensable for correct Command Center operation.

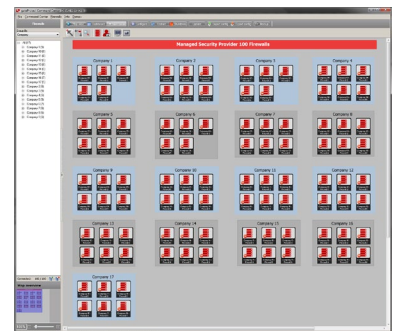
▶ Map view with VPN connections



▶ Central reporting system / monitoring



▶ Map view with appliances sorted by company



We do not offer an express or implied warranty for the correctness /up-to-dateness of the information contained here (which may be change at any time). Future products or functions will be made available at the appropriate time.

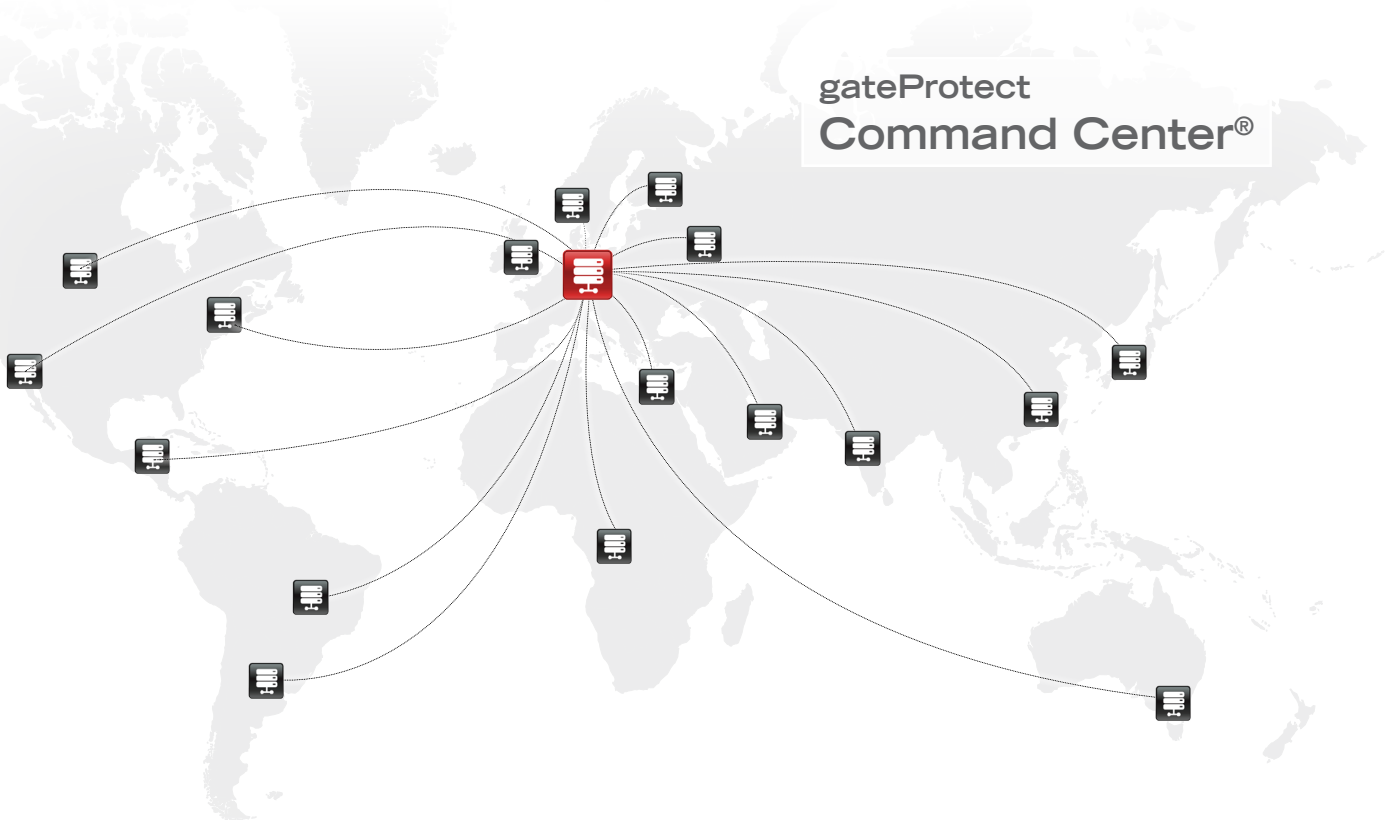
©2012 gateProtect AG Germany. All rights reserved.

Short overview - Command Center®

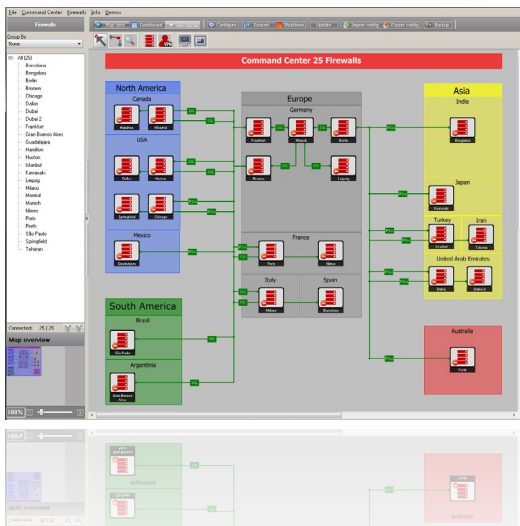
February 2012

An overview of the most important functions

- _ Active administration of up to 500 gateProtect Appliances
- _ Central overview of all firewall systems
- _ Central monitoring of functional status and utilisation of all firewall systems
- _ Direct and immediate access to each firewall
- _ Automatic and central backup
- _ Monitoring of all VPN connections
- _ Central configuration of new installations with VPN
- _ Central import of:
 - updates of any number of firewall systems
 - standard configurations of some firewall systems (for larger-scale rollouts)
 - licence keys and their management
- _ Central notification and categorization of alerts



Map view with VPN connections



Central reporting system / monitoring

Company 16 - Firewall 3 (GPO 125)	Company 16 - Firewall 5 (GPO 125)	Company 16 - Firewall 7 (VMO 125)
<ul style="list-style-type: none"> Threats: ■ License: ■ Update Status: ■ Resources: ■ Certificates: ■ Vpn connections: n/a High Availability: inactive Local Admin: 555-555-143 	<ul style="list-style-type: none"> Threats: ■ License: ■ Update Status: ■ Resources: ■ Certificates: ■ Vpn connections: n/a High Availability: inactive Local Admin: 555-555-165 	<ul style="list-style-type: none"> Threats: ■ License: ○ +60,95 % Update Status: ○ +50,77 % Resources: ○ +49,94 % Certificates: ○ +56,28 % Vpn connections: n/a High Availability: inactive Local Admin: 555-555-176
<ul style="list-style-type: none"> Threats: ■ License: ■ Update Status: ■ Resources: ■ Certificates: ■ Vpn connections: n/a High Availability: inactive Local Admin: 555-555-144 	<ul style="list-style-type: none"> Threats: ■ License: ○ +27,19 % Update Status: ○ +94,94 % Resources: ○ +99,85 % Certificates: ○ +30,32 % Vpn connections: n/a High Availability: inactive Local Admin: 555-555-166 	<ul style="list-style-type: none"> Threats: ■ License: ○ +60,95 % Update Status: ○ +50,77 % Resources: ○ +49,94 % Certificates: ○ +56,28 % Vpn connections: n/a High Availability: inactive Local Admin: 555-555-176